



KENO

VANITIES WALL

location:
DAMP

SPECIFICATIONS:

DESCRIPTION

1-4 light vanity luminaires featuring handcrafted bullnose shaped glass shade(s) and internal sand finish.

LAMPING

Standard: 60W G9 Halogen 120V, suitable for dimming, lamp included.

LED: 3W Replaceable source, 120V, dimmable, 90+ CRI, 3000° K CCT, 300 lumens, 30,000 hours, lamp included.

DIFFUSER

Shade shall be handcrafted glass with sand applied on inner glass, in various decors. 4.25" Dia. x 3" H

CONSTRUCTION

Backplate and Bar are plated steel with option of Wood backplate accessory (see ordering on next page).

METAL FINISH

Fixture shall be finished in Bronze or Satin Nickel.

MOUNTING

Installs directly to a 4" octagonal outlet box. Wall-mount only.

LABELS

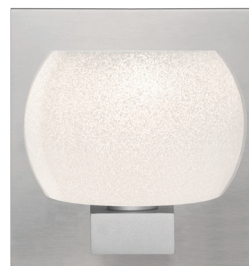
UL or ETL Listed. Suitable for Damp Locations (interior use only).



SMOKE SAND (KENOSM)

KENOGD
GOLD SAND

KENOWH
WHITE SAND



For ordering information, see next page

All dimensions provided are nominal.
Allowance must be made for dimensional tolerance in handcrafted glasses.

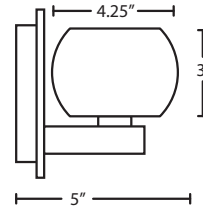
REV 5/19



ORDERING:

FIXTURE	GLASS OPTIONS	LAMP OPTIONS	METAL FINISH
1WF 1 Lt. Sconce	KENOGD Gold Sand	(blank) 60W G9 Hal	BR Bronze
2WF 2 Lt. Vanity	KENOSM Smoke Sand	LED 3W LED	SN Satin Nickel
3WF 3 Lt. Vanity	KENOWH White Sand		
4WF 4 Lt. Vanity			

Ex. 3WF-KENOSM-SN
Keno Vanity, Smoke Sand Shade,
Satin Nickel Finish



WOOD BACKPLATE ACCESSORY - WEATHERED WOOD OR EBONY

- S1003-WW or EB 1 Light Wood Plate, Weathered Wood (WW) or Ebony (EB)
- S1004-WW or EB 2 Light Wood Plate, Weathered Wood (WW) or Ebony (EB)
- S1005-WW or EB 3 Light Wood Plate, Weathered Wood (WW) or Ebony (EB)
- S1006-WW or EB 4 Light Wood Plate, Weathered Wood (WW) or Ebony (EB)

1WF: 5.5" L



2WF: 14" L



3WF: 22" L



4WF: 30" L



Project Information:

Empty box for project information.