



SCOPE

12V SPOTLIGHTS

location:
DRY

SPECIFICATIONS:

DESCRIPTION

Low voltage spotlight with handcrafted glass. Includes Quick-Connect jack.

LAMPING

Standard: 50W Shielded flood 12V halogen MR16 lamp, included.

LED: 7W Replaceable 12V LED MR16 with backlight, dimmable, 90+ CRI, 3000°K CCT, 500 lumens, 25,000 hours, lamp included.

DIFFUSER

Shade shall be handcrafted glass of various decors.

Diameter of 2.375" and height of 4.0"

QUICK-CONNECT JACK

Integral Quick-Connect jack is compatible with Besa Rail Adapter, or Besa Quick-Connect canopies (order separately).

ELEMENT OPTIONS

Refer to next page. Available as either a Quick-Connect element only, with Rail Adapter for use with Besa Monorail, or with 1 light Quick-Connect canopy. Longer stem options are also available.

METAL FINISH

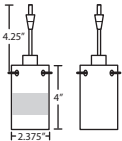
Available in Bronze or Satin Nickel.

LABELS

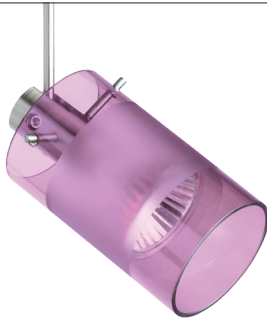
UL or ETL Listed. Suitable for Dry Locations (interior use only).



SCOPE IN CLEAR/FROST



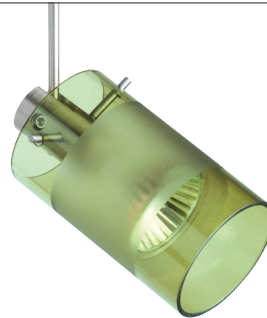
6524EA
AMETHYST/FROST



6524EG
ARMAG/FROST



6524EL
OLIVE/FROST



6524ES
SMOKE/FROST



For ordering information, see next page

All dimensions provided are nominal.
Allowance must be made for dimensional tolerance in handcrafted glasses.

REV 1/19



ORDERING:

QUICK-CONNECT -	SHADE OPTIONS -	LAMP OPTIONS -	STEM OPTIONS -	METAL FINISH
SP Jack Only	6524EA Amethyst/Frost	(blank) 50W Hal MR16	(blank) Standard	BR Bronze
RSP Rail-Ready	6524EC Clear/Frost	LED 7W LED MR16,	06 6"	SN Satin Nickel
1SP 1 Lt Flat	6524EG Armagnac/Frost	dimnable	12 12"	
	6524EL Olive/Frost		18 18"	
	6524ES Smoke/Frost			

Ex. 1SP-6524EL-SN
 Scope Spotlight w/ Olive/Frost Shade,
 Satin Nickel Finish

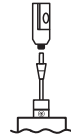
SPOTLIGHT OPTIONS:

SP SPOTLIGHT ELEMENT ONLY



- Spotlight Fixture with Shade
- Quick-Connect Jack integral
- Compatible with Besa Canopies and Rail Adapter

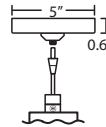
RSP SPOTLIGHT + RAIL ADAPTER



READY FOR RAIL

- Spotlight Fixture with Shade, plus Rail Adapter
- Quick-Connect Jack integral
- Compatible with Besa Monorail System

1SP SPOTLIGHT + MONOPOINT FLAT CANOPY



- Spotlight Fixture with Shade, plus Flat Canopy
- Quick-Connect Jack integral
- Integral Quick-Connect adapter
- 1x electronic 60W transformer fits partially in junction box

Longer Stem Options

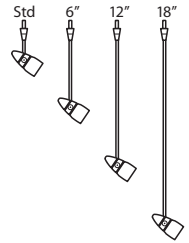
Besa spotlights have a standard stem 1.5" long. For a spotlight with a longer drop, order a stem length of 6", 12" or 18".

Not suitable for use on sloped ceiling when spotlight is installed on a quick-connect canopy.

Note: These are NOT field installable. The complete unit is built at the factory.

Available options are

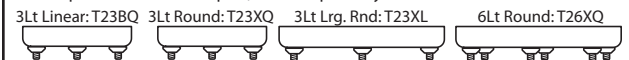
- SP06** 6" stem adds 3.625" to overall length
- SP12** 12" stem adds 9.625" to overall length
- SP18** 18" stem adds 15.625" to overall length



Project Information:

MORE MOUNTING OPTIONS:

• Besa quick-connect canopies, order separately



• Besa Monorail system, order separately