

SHADE INSTALLATION GUIDE

Model Halo 10 Series (LED Wall Sconce 120V)

Halo10-LED, Rev.1 10-22

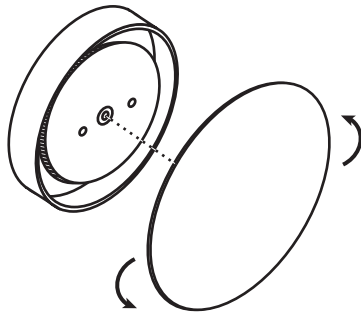


BESA LIGHTING

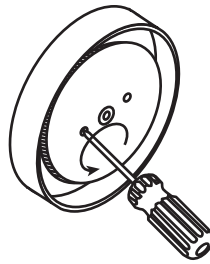
6695 Taylor Rd. Blacklick, OH 43004
www.besalighting.com

Caution: Turn off power to electrical box before installing

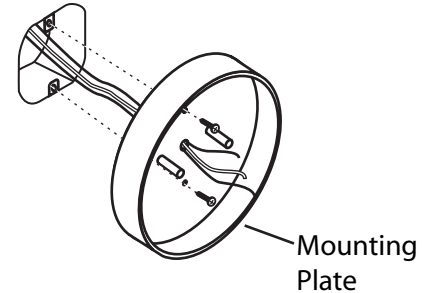
1. Remove faceplate from Housing, by rotating counter-clockwise.



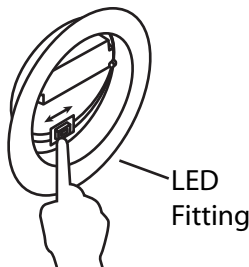
2. Access Mounting Plate by unscrewing LED Screws, then releasing LED Fitting.



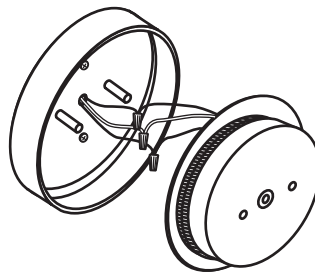
3. Install Mounting Plate to Outlet Box with Mounting Screws and pull house wiring through center opening.



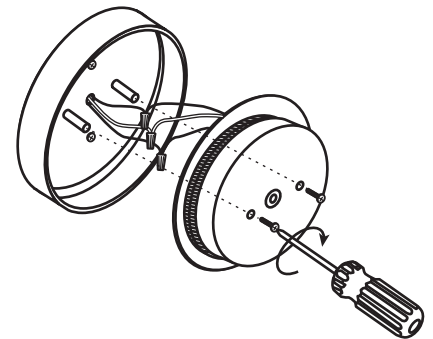
4. On LED Fitting, adjust Color Temp by sliding bottom left or right, selecting: 3000(WW)/3500(NW)/4000(CW)



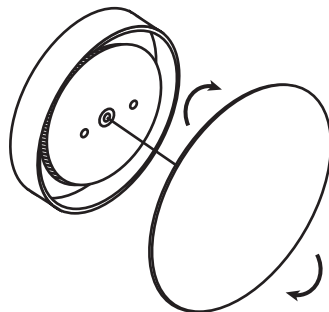
5. Install House Wires to Fixture Wires and Secure with Wire Nuts: Black to Black, White to White, and Ground to Ground.



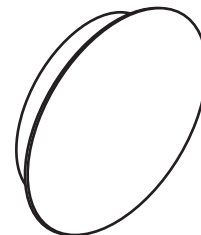
6. Install LED Fitting back onto Mounting Canopy with LED Screws.



7. Install Faceplate back onto Fixture Canopy.



8. Restore power.



All electrical connections and the installation of this fixture must be in agreement with local codes, ordinances or the NEC (National Electric Code) or CEC (Canadian Electrical Code). Do not connect this fixture to an electrical system that does not provide a means for equipment grounding.