



# TAMBURO 16

SEMI-FLUSH MOUNT CEILING

location:  
**DAMP**

## SPECIFICATIONS:

### DESCRIPTION

Semi-flush mounted ceiling luminaires, featuring handcrafted glass. "Near Ceiling" design creates soft ceiling glow.

### LAMPING

**Standard:** 3x60W A19 120V incandescent, lamp not included. Dimmable with standard incandescent dimmer (not included).

**LED:** 3x11W Replaceable LED source, 120V, CL dimmable, 80+ CRI, 2800°K CCT, 1100 lumens, 30,000 hours. Lamp included.

### DIFFUSER

Handcrafted glass diffuser is available in various decors. 15.75" Dia. x 8" H

### CONSTRUCTION

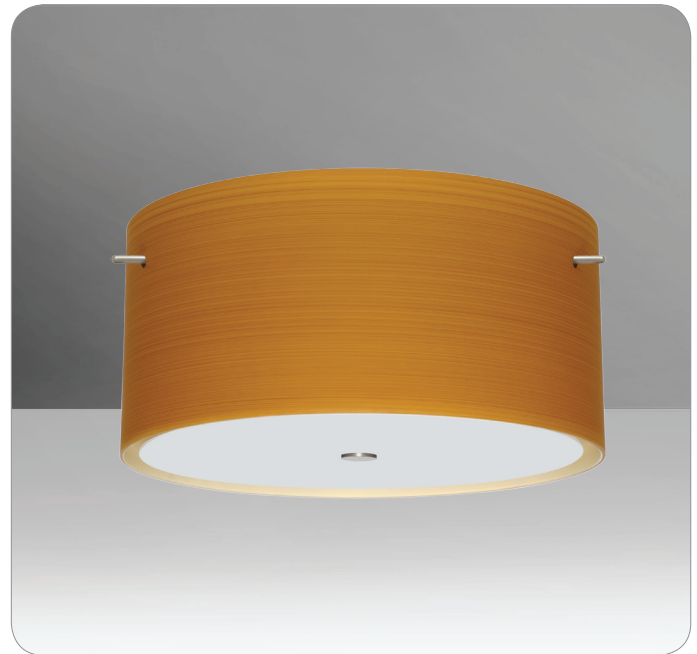
Canopy (5" dia.) is plated stamped steel. Canopy and glass retainer hardware are available in either Bronze or Satin Nickel finish.

### MOUNTING

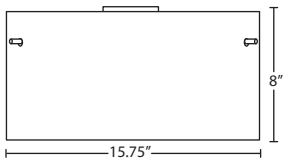
Installs directly to a 4" octagonal outlet box, centered on fixture. 90°C supply wire required for incandescent lamping.

### LABELS

UL or ETL Listed. Suitable for Damp Locations (interior use only).



TAMBURO 16 CEILING SHOWN IN OAK (4008OK)



4008GS  
STONE GOLD FOIL



4008CS  
STONE COPPER FOIL



4008SS  
STONE SILVER FOIL



400800  
CLEAR STONE



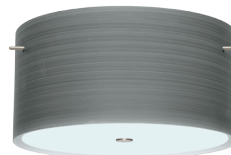
400807  
OPAL MATTE



4008KR  
CHALK



4008TN  
TITAN



For ordering information, see next page

All dimensions provided are nominal. Allowance must be made for dimensional tolerance in handcrafted glasses.

REV 6/23



ORDERING:

FIXTURE	GLASS OPTIONS	LAMP OPTIONS	METAL FINISH	OPTIONS
1KM Ceiling	400807 Opal Matte	(blank) 3x 60W A19 Incan	BR Bronze	LW Low Wattage
	4008CH Cherry	LED 3x11W LED	SN Satin Nickel	labeling
	4008OK Oak			
	4008TN Titan			
	400800 Clear Stone			
	4008CS Stone Copper Foil			
	4008GS Stone Gold Foil			
	4008SS Stone Silver Foil			

**Ex. 1KM-4008OK-SN**  
 3 Lt. Flat Ceiling w/ Oak Glass,  
 Satin Nickel Finish

**Project Information:**